

GeoNav™



Ilex Computing Ltd.

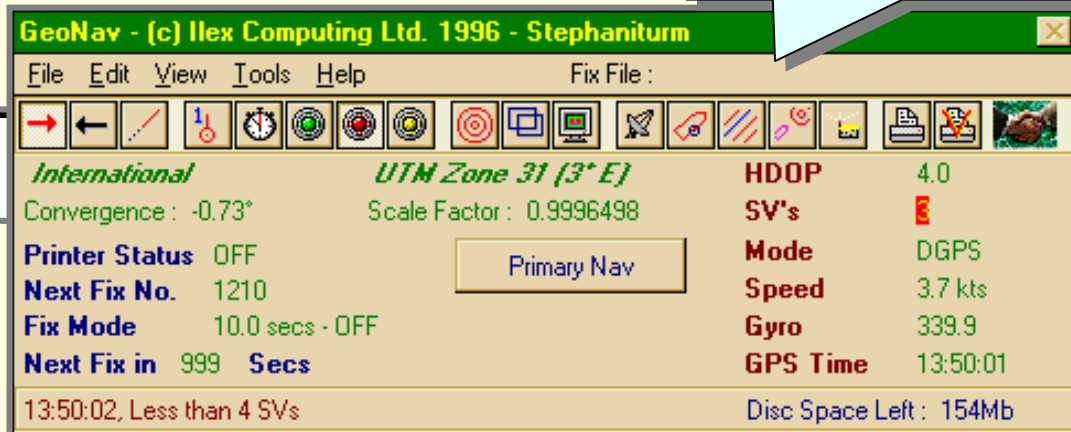
From

Synectica
Solutions, Systems & Software

Offshore Survey Software

- **GeoNav** is a comprehensive and powerful software system for the acquisition and display of navigation and survey data for virtually any marine or offshore application.
- Designed to run on Microsoft® Windows™ 16 and 32 bit systems **GeoNav** offers a familiar graphical interface and close integration with other Windows software.
- **GeoNav** provides interfacing to DGPS, acoustic and range-bearing positioning systems plus many echo-sounders, gyros and other standard equipment (including analogue systems such as ROV gyros). It outputs configurable data strings for video overlays, profiling systems, fix boxes and other external devices.
- Powerful and accessible user configuration in **GeoNav** virtually eliminates the need for bespoke programming effort when a new device is supplied. The user, in the field, can format any ASCII data string as required.
- Acquired data can be exported to DXF, UKOOA or Comma Separated Value files and **GeoNav** is supplied with a data viewing package to view, graph and export the data for any fix file directly.

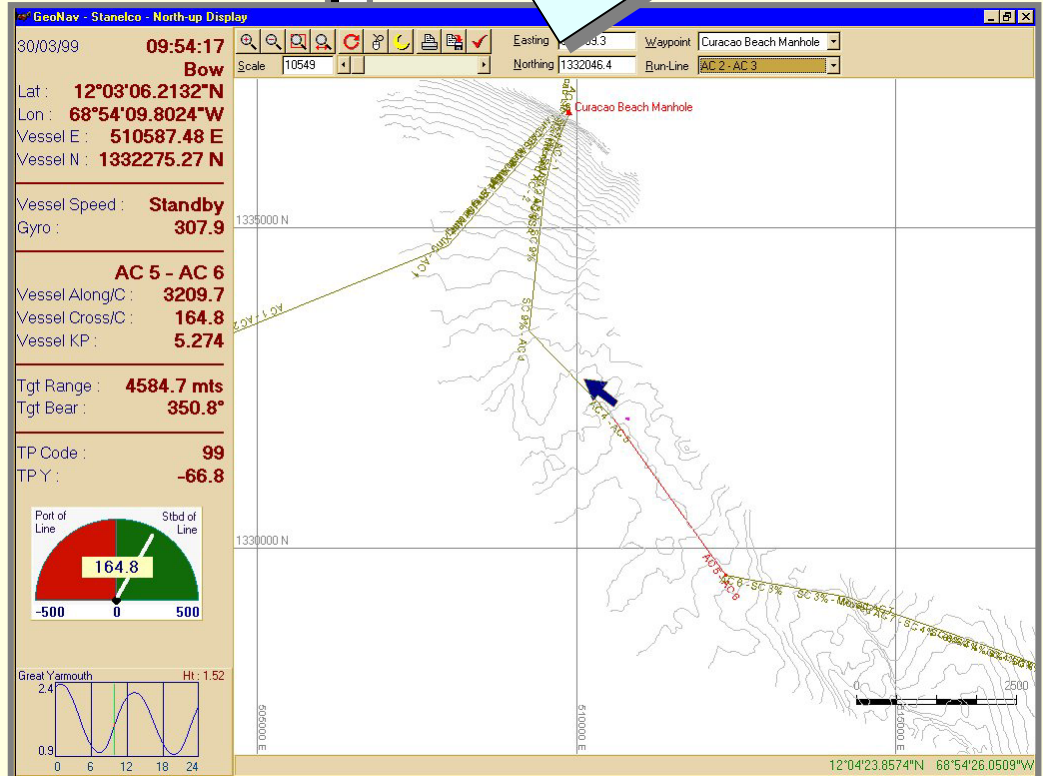
The Control Panel provides an information centre for the on-line Surveyor. From here, he can readily view, edit and monitor operation parameters within a standard Windows environment.



- **GeoNav** is truly hardware independent so that if hardware resources (COM Ports for example) are available to Windows, they can be used along with the Windows configured printers and other settings.
- The **GeoNav** system supports a Multi-VGA adapter to provide a virtual screen, which can encompass four actual screens. In this way the Surveyor can have his Control panel and monitoring windows on one monitor, a Helmsman display on another, a Target screen on another and a North-up chart display on the fourth. The most relevant screens for each user can be piped to wherever they are required using VGA splitters. All the screens are user configurable in the data that is displayed down the left-hand side (including real-time tides).
- Several companies use **GeoNav** as their generic survey package and, by the addition of customised software modules, use it for very specialised applications such as Controlled Depth Tows of pipeline bundles and real-time Slack Management systems for cable laying.

GeoNav specification

- Projections (UTM, Lambert, Hotine, BRSO, MRSO)
- Datum Shift (7 Parameter Shift B/Wolff)
- DXF Import of field data from UKOOA, CSV
- GPS/DGPS NMEA Interfaces incl. NR230
- Gyro Interfaces (SG Brown, Arma Brown. etc.)
- HPR Interfaces (309 & 410)
- Artemis, MN8 RTT interface
- User Configurable interface drivers
- Night/Day & configurable Colour Modes
- Unlimited Waypoint and Runline definitions
- Multiple Vessel Outline definition and selection
- Time, Distance or Update Fixing and Logging
- Export data to Paradox, CSV, UKOOA and DXF
- Multiple vessels display
- Offset computations for Vessel and ROV
- Manual co-ordinate entry & Datum Shift Verification
- Single Screen to set ALL Active Parameters
- HPGL Plotter Interface
- Virtual, on Screen, Tractor-Feed Printer
- Graphics dump to bitmap (.BMP) File or Printer
- Data Statistics Screens to graph, list and export fix data
- Point-to-Point calculator
- Real-time Tide computation
- On-Screen interactive measurement and bearing
- Video Overlay Output String
- Navigation Data Output String
- Interactive Scaling, Window & Zoom features
- All Transponders displayed and selectable
- All Vessel offsets displayed and selectable
- On-line context Windows help system
- ROV event logging using event button palette
- Rng/Brg, ETA, SOG, COG computed to multiple targets
- Offtrack, KP data for Offset and TP with comparison.
- Audit trail recorded and all change of status data logged during logging to fix file.



GeoNav in action

The Chart display has a user configurable data panel on the left side and can be re-sized and positioned like any other window. In addition to scale bar, L/R indicator, and graticule overlays, there is an interactive cursor measurement feature.

The GeoNav package

Provided on CD-ROM (or diskette if required) the software package comes complete with an installation set-up, an operation manual and on-line Windows Help facility.

Minimum computer requirements are a Pentium 266 MHz processor, 32 MB RAM and 200 MB Hard Disc.

GeoNav is produced by Ilex Computing Ltd.

Based in Great Yarmouth, UK, the company provides IT and software services primarily for the offshore survey industry. Their client list includes RACAL, EMC, Van Oord ACZ, Fugro UDI, Shell and Stolt Comex Seaway.

Ilex software and services are competitively priced and the company can tailor or develop additional GeoNav modules to meet any special customer requirements.

Contact Martin Delaney at:

Synectica

Solutions, Systems & Software

Synectica Limited LONDON UK

Tel/Fax: +44 (020) 8504 2829 / 1634

Email service@synectica.co.uk